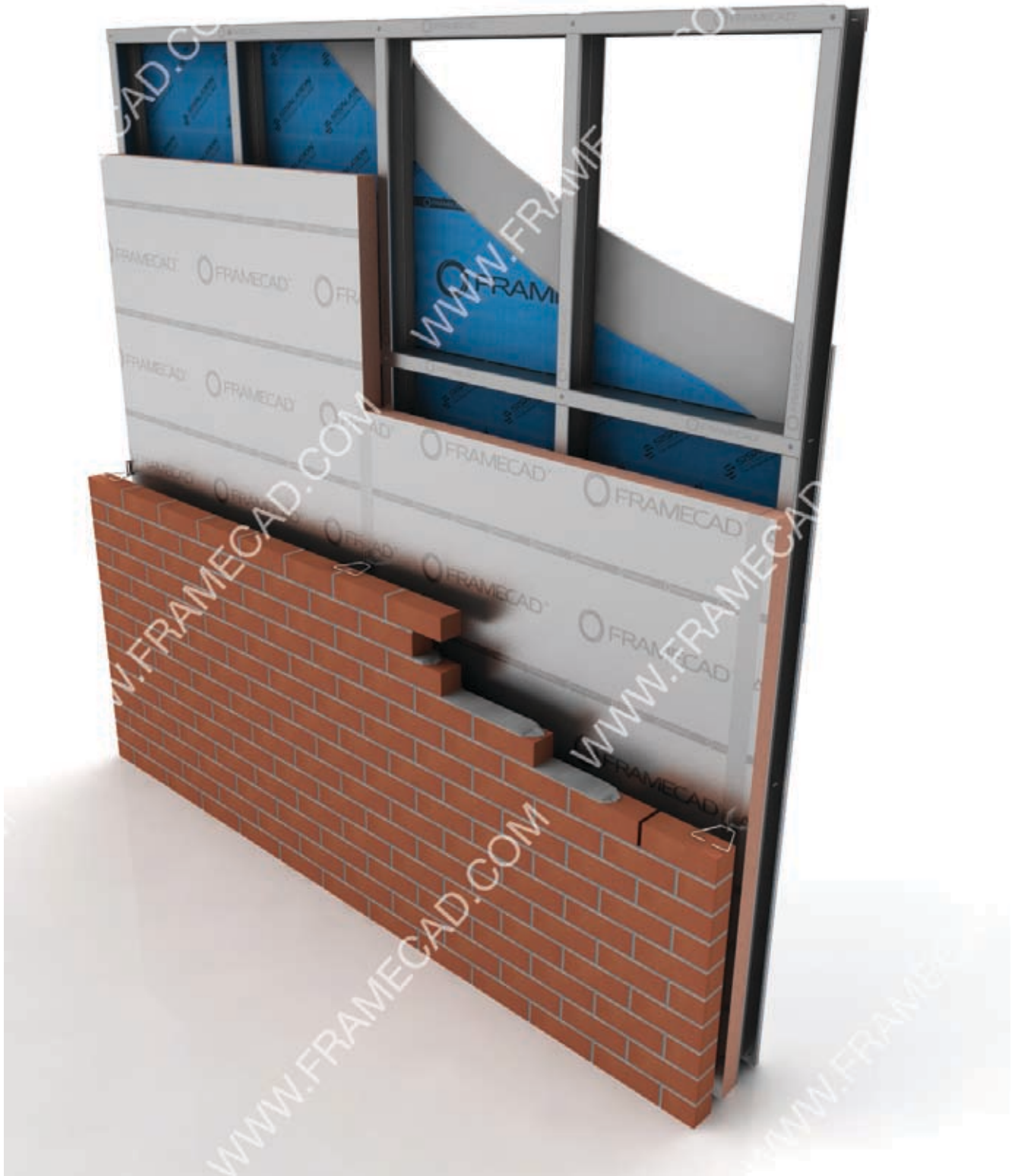
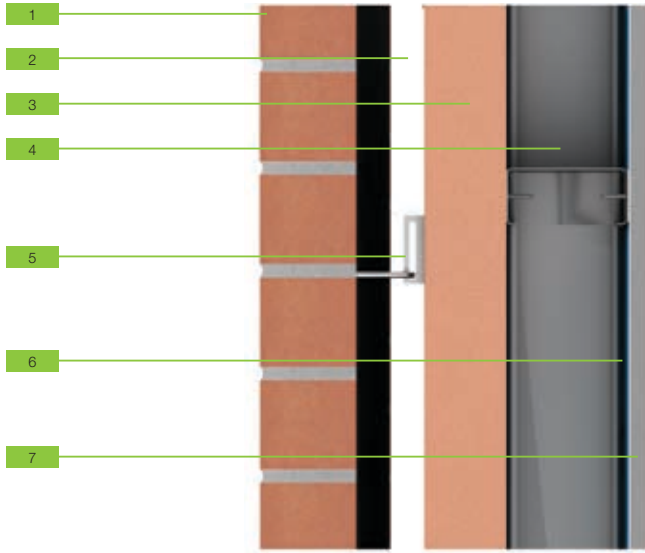


Brick Veneer Wall System





Brick Veneer Wall System



PRODUCTS		
1	Cladding	Brick Veneer - 70mm
2	Cavity	Air Cavity
3	External Insulation	Rigid Foam Insulation - 80mm
4	Framing	89 x 41mm Steel Stud - 0.95mm Z275 G550
5	Brick Tie	12 x sealbinalok
6	Moisture Barrier	Building Wrap
7	Internal Lining	12.5mm - Gypsum

PERFORMANCE
Performance data for this wall system is available on request, including
<ul style="list-style-type: none"> • Speed of construction • Impact Resistance • Weight of total system • Thermal Insulation Rating • Fire Rating • Acoustic Insulation Rating

FASTENERS REQUIRED			
Image	Application	Description	Part No.
	Brick veneer to steel structure	FRAMECAD Brick Ties	
	Insulation to Steel	10g - 18 x 100mm, Bugle, PH#3, Self Driller	
	Framing - Steel to Steel	10g - 18 x 19mm, Pan, Lox, Self Driller, 1000hrs	Bulk - 001996 Collated - 000392
	Lining - Gypsum to Steel framing	6g - 20 x 25mm, Bugle Scavenger, Self Driller, 12hrs	Bulk - 001440

Note - Screw images are not shown to scale

This system has been designed using FRAMECAD technology and FRAMECAD approved building products. The performance of the system cannot be claimed if any of its components are substituted with non-FRAMECAD approved components.

This document has been published for the purpose of providing information of a general nature only. Further, no guarantee, warranty, or any other form of assurance is given as to the accuracy, currency or completeness of the information provided. Accordingly, any reliance on, or use, by you of any information contained within this document for any purpose whatsoever shall be entirely at your own risk, and any liability to you is expressly disclaimed to the maximum extent permitted by law.

Copyright 2009 FRAMECAD Solutions Ltd. Reproduction of any part of this document is prohibited, except with the prior written consent of FRAMECAD Solutions Ltd.

FRAMECAD Hardware
is distributed by:
FRAMECAD Building Products
PO Box 1292, Auckland 1140
New Zealand

P +64 9 377 6640
F +64 9 307 7139
E info@framecad.com
www.framecad.com

Innovation Integration Sustainability
www.framecad.com