

## Fashion Weather Boards

FRAMECAD Fashion Weatherboards are a versatile fibre cement cladding that creates cost effective durable wall cladding systems.

### Applications

- Fashion Weatherboards provide traditional weatherboard look with deep shadow lines. Can be effectively combined with other FRAMECAD cladding products to create a contemporary modern look.
- Suitable for use in residential villa's, townhouses.

### Features & Benefits

- Attractive finishes in six different styles, including - Smooth, Rusticated, Styleline, Colonial, Frontier.
- Complete range of accessories to make installation quick and easy.
- Lightweight, easy to handle and install.
- Pre-primed, and easily finished with acrylic paint or stain.
- Resistant to damage from moisture and rotting when installed and maintained correctly. Tested in accordance with AS/NZS2908.2.
- Non combustible and resists flame spread. Fire ratings up to 60mins can be achieved with Fashion Weatherboards - technical details available on request.
- Fibre cement cladding is dimensionally stable - it will not warp or shrink over time.
- Resists damage from insects.

### Environmental Info

- The raw materials used to manufacture fibre cement are low in toxicity - wood pulp, cement, sand and water (recycled up to 4 times).
- Fibre cement is non-toxic to dispose of
- H&S - Fibre cement is inert, non-toxic and not prone to off-gassing of volatile materials.

### Manufacturing Classification

- FRAMECAD Fashion Weather boards are manufactured to AS/NZS 2908.2 'Cellulose-Cement Products'.
- ISO9001 'Telarc' certified manufacturer.



Colonial



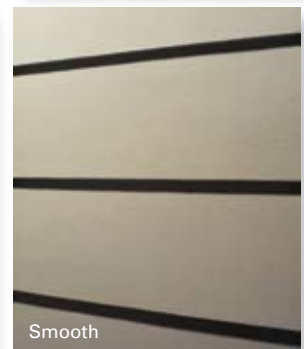
Frontier



Rusticated



Styleline



Smooth

## Fashion Weather Boards

SPECIFICATIONS								
	Thickness (mm)	Length (mm)	Width (mm)	Effective Cover (mm)	No. of Planks per Metre Height	Weight per Plank (kg)	Units per pack	Part Number
Frontier	7.5mm	4200	310	280	3.6	16.2	60	001907
	7.5mm	4200	245	215	4.7	13.2	60	001906
Smooth	7.5mm	4200	305	275	3.6	15.8	60	001902
	7.5mm	4200	240	210	4.8	12.8	60	001901
	7.5mm	4200	180	150	6.7	10.0	60	001900
Styleline	7.5mm	4200	205	175	5.7	11.7	60	001904
Colonial	7.5mm	4200	205	175	5.7	11.7	60	001905
Rusticated	7.5mm	4200	205	175	5.7	11.7	60	001903

EARLY FIRE HAZARD INDICES – TESTED TO AS 1530 PART 3	
Ignition Index	0
Flame Spread Index	0
Heat Evolved Index	0
Smoke Developed Index	0-1

FRAMECAD Cladding & Lining  
is distributed by:  
Bon Pacific Trading Limited  
PO Box 1292  
Auckland 1140, New Zealand

**P** +64 9 377 6640  
**F** +64 9 307 7139  
**E** info@bonpac.com  
[www.bonpac.com](http://www.bonpac.com)

Innovation Integration Sustainability  
[www.framecad.com](http://www.framecad.com)