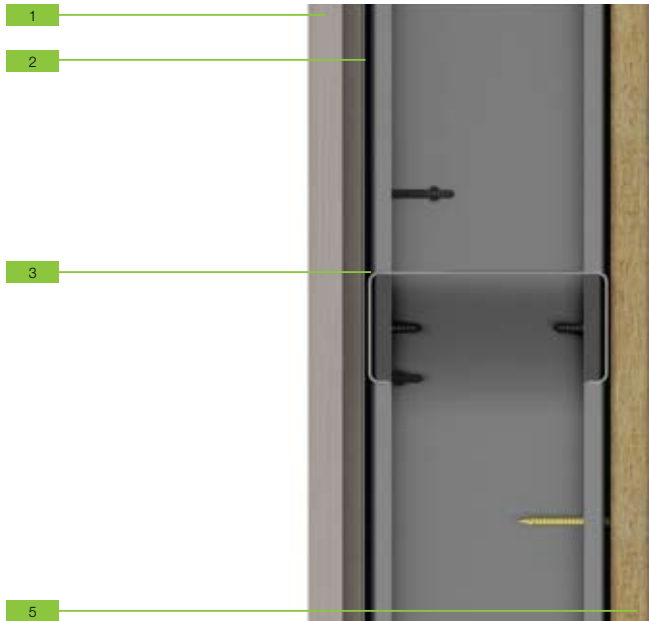


Low Cost Residential Wall System #2






Low Cost Residential Wall System #2



PRODUCTS		
1	Outside Cladding	FRAMECAD 9mm Fibre Cement Board with 50mm External Battens
2	Building Wrap	FRAMECAD TuffStuff Building Wrap
3	Framing	FRAMECAD 89 x 41mm Steel Stud - 0.75mm Z275 G550
4	Insulation	None
5	Internal Lining	FRAMECAD 15mm Triboard

PERFORMANCE
Performance data for this wall system is available on request, including
<ul style="list-style-type: none"> • Speed of construction • Impact Resistance • Weight of total system • Thermal Insulation Rating • Fire Rating • Acoustic Insulation Rating

FASTENERS REQUIRED			
Application	Description	Image	Part No.
Cladding - Fibre Cement to Steel Framing	8g - 18 x 32mm CSK, Lox, Winged Self Driller, 1000 hrs		Bulk - 001990 Collated - 001851
Framing - Steel to Steel	10g Dual Thread x 16mm, Phillips, Pin Point, 1000hrs		Bulk - 001401
Lining - Triboard to Steel framing	8g x 41mm CSK, Pilot Pt Driller, 1000hrs		Bulk - 002096

Note - Screw images are not shown to scale

This system has been designed using FRAMECAD technology and FRAMECAD approved building products. The performance of the system cannot be claimed if any of its components are substituted with non-FRAMECAD approved components.

This document has been published for the purpose of providing information of a general nature only. Further, no guarantee, warranty, or any other form of assurance is given as to the accuracy, currency or completeness of the information provided. Accordingly, any reliance on, or use, by you of any information contained within this document for any purpose whatsoever shall be entirely at your own risk, and any liability to you is expressly disclaimed to the maximum extent permitted by law.

Copyright 2009 FRAMECAD Solutions Ltd. Reproduction of any part of this document is prohibited, except with the prior written consent of FRAMECAD Solutions Ltd.

FRAMECAD Hardware
is distributed by:
FRAMECAD Building Products
PO Box 1292, Auckland 1140
New Zealand

P +64 9 377 6640
F +64 9 307 7139
E info@framecad.com
www.framecad.com