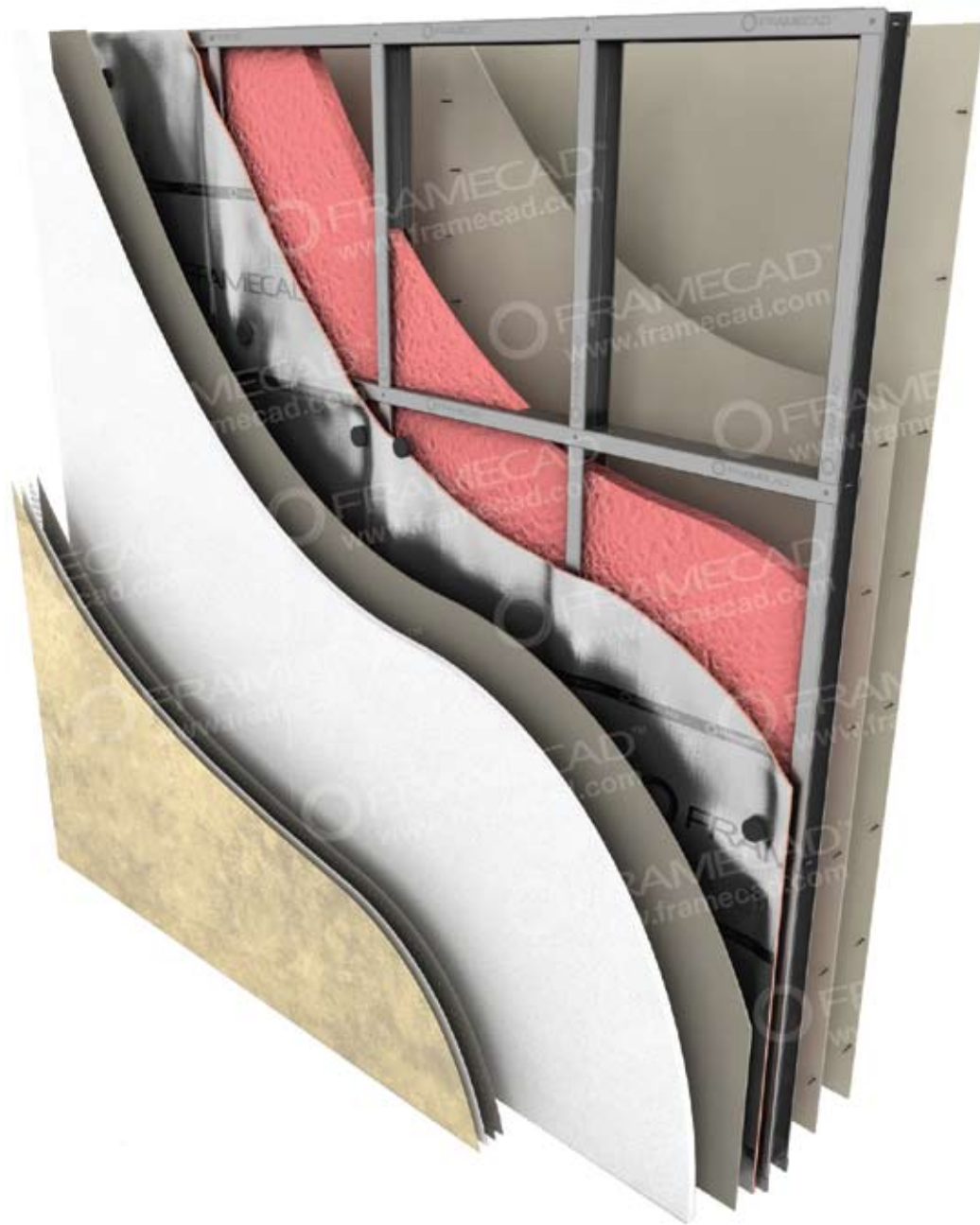




FRAMECAD®
BUILDING PRODUCTS

Villa Wall System

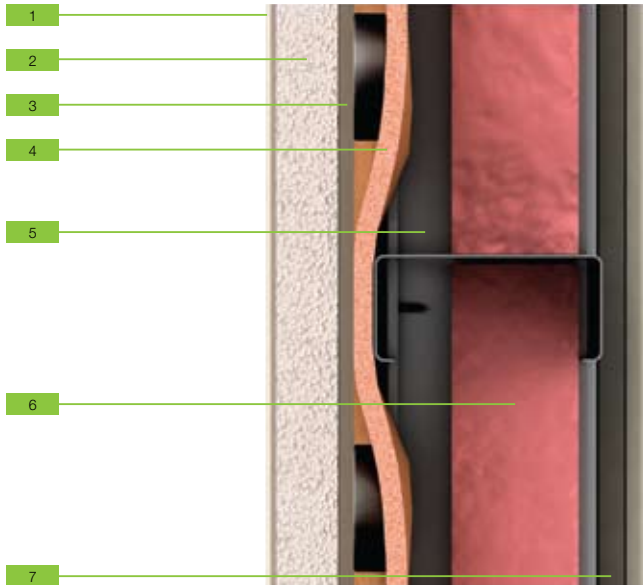


Innovation Integration Sustainability

www.framecad.com



Villa Wall System



PRODUCTS		
1	Outside Finish	6mm - BASF 3 Layer Texture coat
2	Outside Cladding	50mm - BASF EPS Foam
3	Backer	FRAMECAD 9mm - Fibre Cement Board
4	Building Wrap	FRAMECAD 4mm - Insulbreak 40F
5	Framing	FRAMECAD 89 x 41mm Steel Stud - 0.95mm Z275 G550
6	Insulation	FRAMECAD 65mm - Glass wool
7	Internal Lining	2 x FRAMECAD 12.5mm - Gypsum

PERFORMANCE	
Performance data for this wall system is available on request, including	
<ul style="list-style-type: none"> • Speed of construction • Impact Resistance • Weight of total system • Thermal Insulation Rating • Fire Rating • Acoustic Insulation Rating 	

FASTENERS REQUIRED			
Application	Description	Image	Part No.
Cladding - Fibre Cement to Steel Framing	8g - 18 x 32mm CSK, Lox, Winged Self Driller, 1000 hrs		Bulk - 001990 Collated - 001851
Framing - Steel to Steel	10g - 18 x 19mm, Pan, Lox, Self Driller, 1000hrs		Bulk - 001996 Collated - 000392
Lining - Gypsum to Steel framing	6g - 20 x 25mm, Bugle Scavenger, Self Driller, 12hrs		Bulk - 001440
Lining - Gypsum to Gypsum	10g - 8 x 38mm, Bugle, Pilot Point, 24hrs		Bulk - 002074

Note - Screw images are not shown to scale

This system has been designed using FRAMECAD technology and FRAMECAD approved building products. The performance of the system cannot be claimed if any of its components are substituted with non-FRAMECAD approved components.

This document has been published for the purpose of providing information of a general nature only. Further, no guarantee, warranty, or any other form of assurance is given as to the accuracy, currency or completeness of the information provided. Accordingly, any reliance on, or use, by you of any information contained within this document for any purpose whatsoever shall be entirely at your own risk, and any liability to you is expressly disclaimed to the maximum extent permitted by law.

Copyright 2009 FRAMECAD Solutions Ltd. Reproduction of any part of this document is prohibited, except with the prior written consent of FRAMECAD Solutions Ltd.

FRAMECAD Hardware
is distributed by:
FRAMECAD Building Products
PO Box 1292, Auckland 1140
New Zealand

P +64 9 377 6640
F +64 9 307 7139
E info@framecad.com
www.framecad.com